

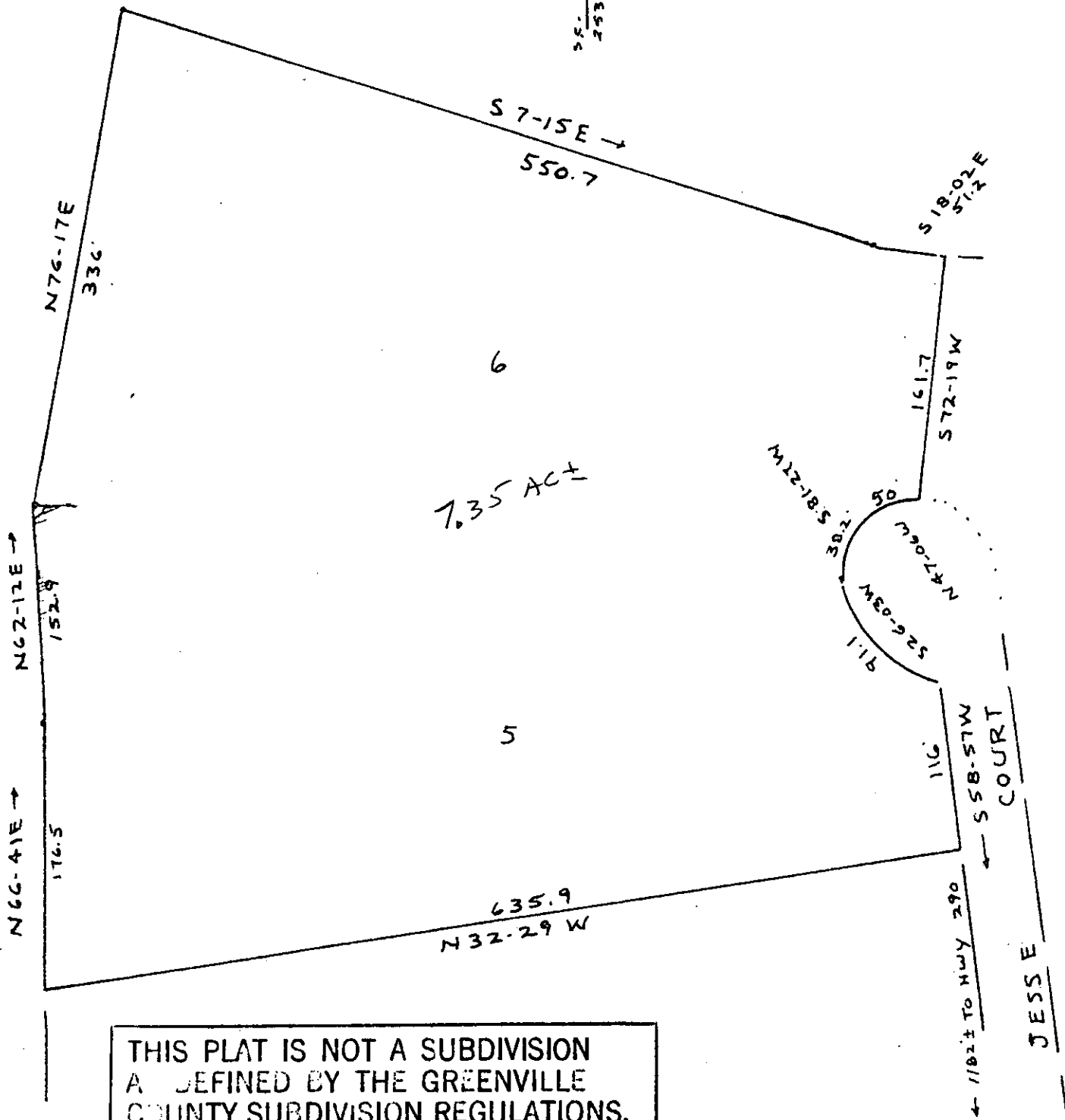
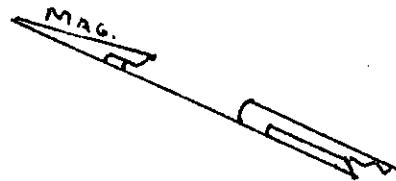
JUL 20 1982

FILED  
GREENVILLE CO. S. C.

JUL 20 4 40 PM '82

DONNIE S. TANKERSLEY  
R.M.C.

MICROFILMED



THIS PLAT IS NOT A SUBDIVISION  
AS DEFINED BY THE GREENVILLE  
COUNTY SUBDIVISION REGULATIONS.

7/20/82

*Donnie S. Tankersley*

Chairman, Secretary, or Director of  
Planning.  
Greenville County Planning Commission

ADJUSTED PLAT LOTS 5 & 6

9-C-79

J. AND S. ESTATES

1563

NEAR SANDY FLAT

GREENVILLE COUNTY S.C.

WEBB SURVEYING & MAPPING CO.

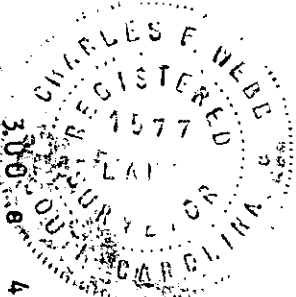
SCALE 1" = 100'

APRIL 1982



THIS PLAT FOR RECORDING

Closure Datum 15000



43241801